

8

7

6

5

4

3

2

1

REVISIONS

EFFECTIVITY	REV	DESCRIPTION	DATE	APPROVED
FUTURE	A	FIRST RELEASE ISSUE	1 / 20 / 00	

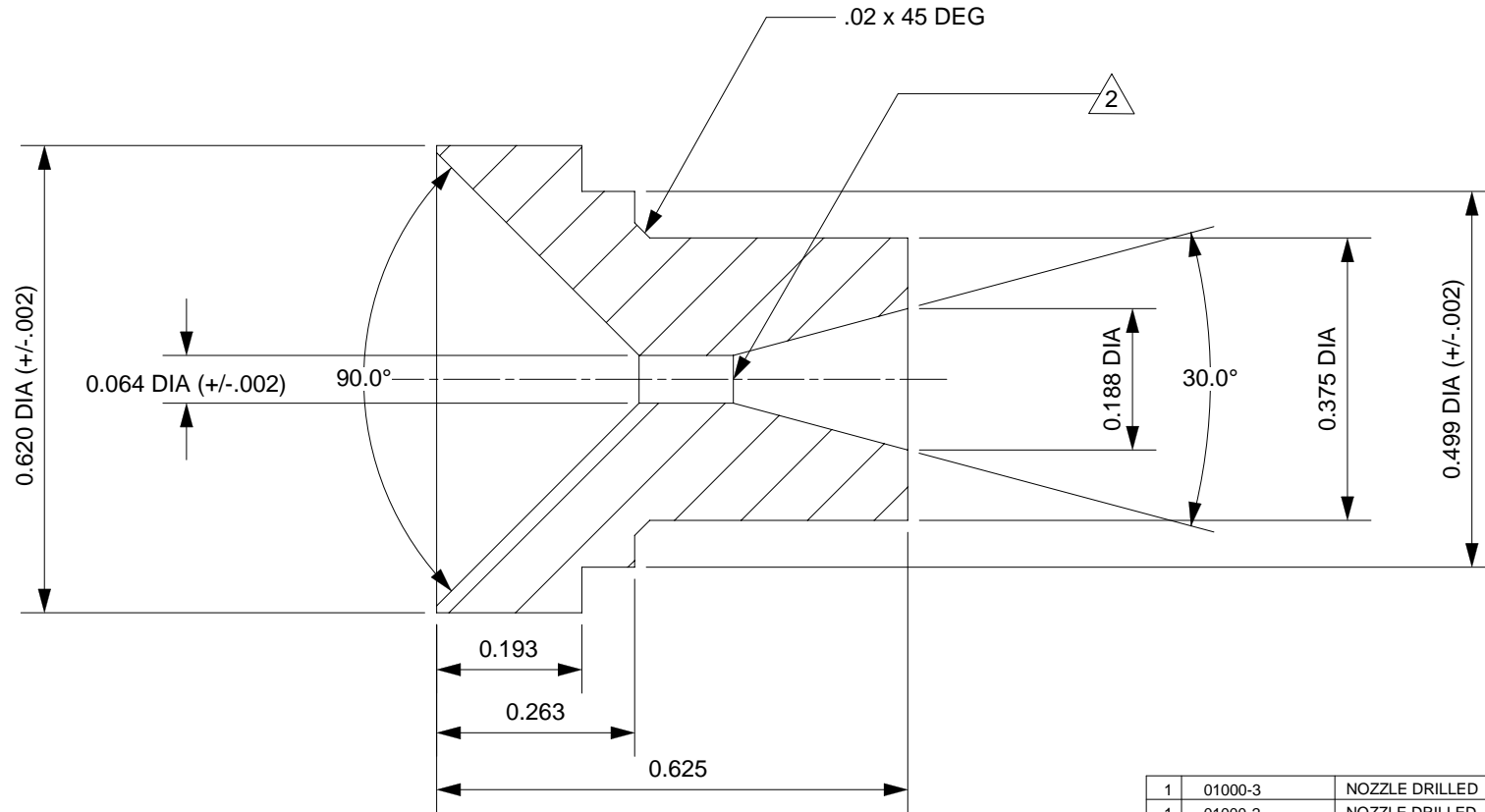
NOTES:

1. UNLESS OTHERWISE SPECIFIED:

A. BREAK EDGES .005.

B. SURFACE ROUGHNESS 125/.

2. DASH NUMBERS INDICATE IN-HOUSE MACHINING OF THROAT DIAMETER



1	01000-3	NOZZLE DRILLED .070" Dt (APOGEE)	3
1	01000-2	NOZZLE DRILLED .096" Dt (APOGEE)	2
1	01000-1	NOZZLE DRILLED .077" Dt	1
QTY	PART NUMBER	DESCRIPTION	ITEM

UNLESS OTHERWISE SPECIFIED DIMENSIONS ARE IN INCHES

.XX +/- .010	.XXX +/- .005	ANGLES +/- 2 deg.
-----------------	------------------	----------------------

MATERIAL
BLACK PHENOLIC
(PROPRIETARY)

FINISH

LIST OF MATERIAL	
CONTRACT NUMBER	
PREP B. ROSENFELD	5 / 99
CHKR	
APVD	
APVD	
SIZE A	NUMBER 01000
SCALE 4 / 1	SHEET 1 OF 1

RCS ROCKET MOTOR COMPONENTS, INC.
 2113 W. 850 N. Street
 Cedar City, Utah 84720
 (435) 867-9998 (Ph)
 (443) 222-0203 (Fax)

D8 NOZZLE

01000

8

7

6

5

4

3

2

1