

NOTES:

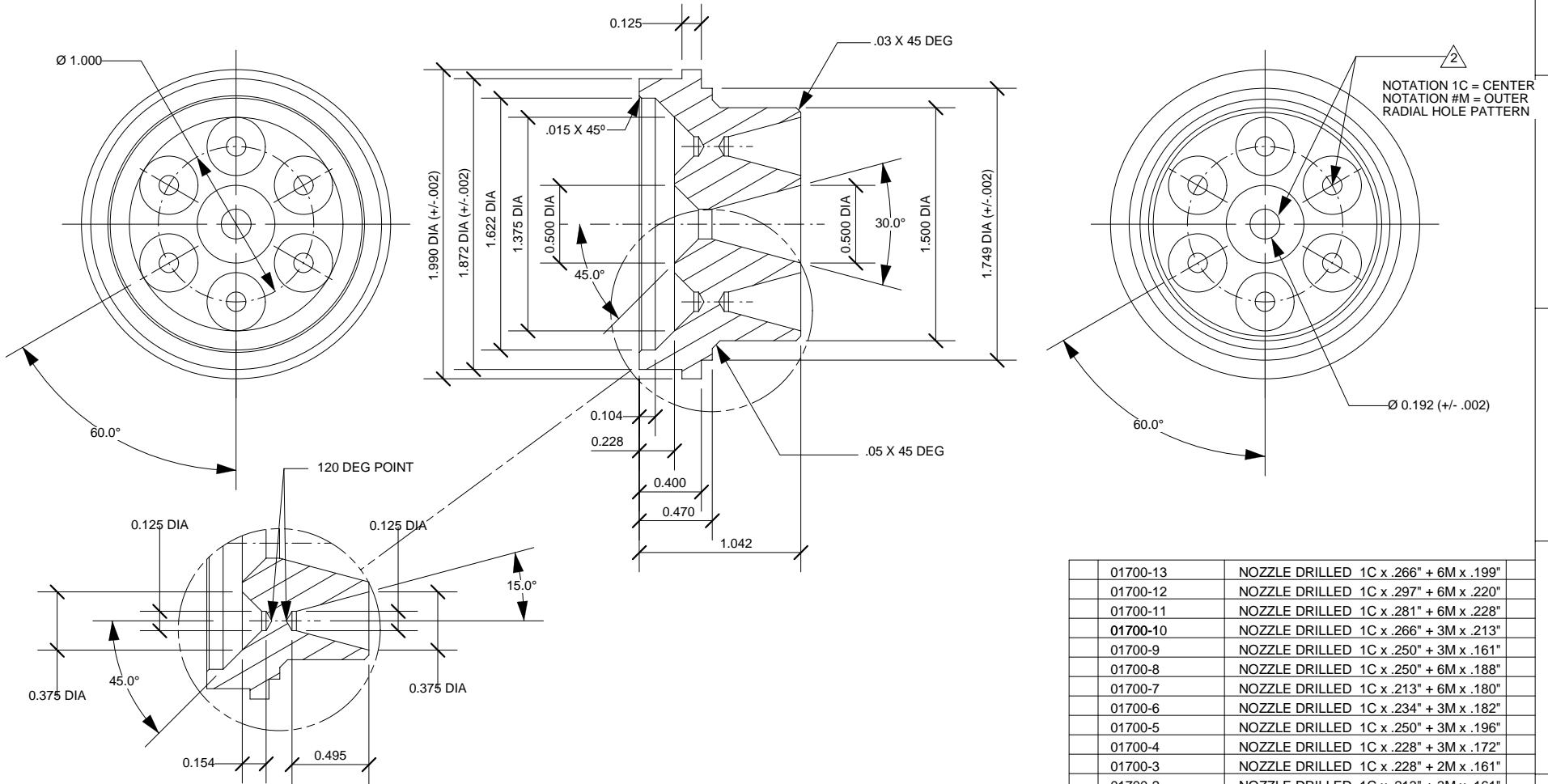
1. UNLESS OTHERWISE SPECIFIED:

- A. BREAK EDGES .005.
- B. SURFACE ROUGHNESS $32\sqrt{}$.


2. DASH NUMBERS INDICATE IN-HOUSE MACHINING OF THROAT DIAMETERS.

REVISIONS

EFFECTIVITY	REV	DESCRIPTION	DATE	APPROVED
FUTURE	A	REDRAWN TO BLUEPRINT FORMAT	11 / 9 / 99	
FUTURE	B	REDESIGN WITH STEPPED I.D. (SEE E.O.)	6 / 26 / 00	
FUTURE	C	REMOVED .020-.030 CHAMFER (NOT IN MOLD)	9 / 26 / 00	



01700-13	NOZZLE DRILLED 1C x .266" + 6M x .199"
01700-12	NOZZLE DRILLED 1C x .297" + 6M x .220"
01700-11	NOZZLE DRILLED 1C x .281" + 6M x .228"
01700-10	NOZZLE DRILLED 1C x .266" + 3M x .213"
01700-9	NOZZLE DRILLED 1C x .250" + 3M x .161"
01700-8	NOZZLE DRILLED 1C x .250" + 6M x .188"
01700-7	NOZZLE DRILLED 1C x .213" + 6M x .180"
01700-6	NOZZLE DRILLED 1C x .234" + 3M x .182"
01700-5	NOZZLE DRILLED 1C x .250" + 3M x .196"
01700-4	NOZZLE DRILLED 1C x .228" + 3M x .172"
01700-3	NOZZLE DRILLED 1C x .228" + 2M x .161"
01700-2	NOZZLE DRILLED 1C x .213" + 3M x .161"
01700-1	NOZZLE DRILLED 1C x .266" Dt

UNLESS OTHERWISE SPECIFIED DIMENSIONS ARE IN INCHES		QTY	PART NUMBER	DESCRIPTION	ITEM
.XX +/- .010	.XXX +/- .005	ANGLES +/- 2 deg.		LIST OF MATERIAL	
MATERIAL BLACK PHENOLIC (PROPRIETARY)		CONTRACT NUMBER		 2113 W. 850 N. Street Cedar City, Utah 84720 (435) 867-9998 (Ph) (443) 222-0203 (Fax)	
FINISH		PREP B. ROSENFELD	3 / 99	MEDUSA 54 MM NOZZLE SIZE A NUMBER 01700	
		APVD		SCALE 1 / 1	
		CHKR		SHEET 1 OF 1	